

ELKAY® SPECIFICATIONS

EZH20™ – In-Wall Recessed Bottle Filling Station Models LZWSM8K & LZWSMDK

PRODUCT FEATURES

- Designed specifically for use with SwirlFlo® and Soft Sides® architectural fountains
- Space saving ADA-compliant design
- Sanitary, no-touch, sensor activation with automatic 30-second shut-off timer
- WaterSentry® Plus 3000 gallon filter included
- Silver ion anti-microbial protection
- Quick fill rate is 1.1 gpm for refrigerated units and 1.5 gpm for non-refrigerated units
- Visual user interface display includes:
 - Filter Monitor indicating when replacement is necessary
 - Green Ticker counts the quantity of 16 oz. bottles saved from the landfill for non-refrigerated units and 12 oz. bottles saved for refrigerated units
- Includes mounting frame for quick and simple installation
- Hinged door for easy servicing
- Constructed of durable 18 gauge stainless steel and ABS plastic

Model LZWSM8K provides 8.0 gph of 50° F water at 90° F ambient and 80° F inlet water. Model LZWSMDK is non-refrigerated and provides ambient water. Shall be recessed design and constructed of 18 gauge Type 300 series stainless steel and ABS plastic. Shall include electronic sensor for no-touch activation with automatic 30-second shut-off timer. Shall provide 1.1 gpm flow rate with laminar flow to minimize splashing. Shall include antimicrobial protected plastic components to prevent mold and mildew. Shall include the WaterSentry® Plus, certified to NSF/ANSI 42 and 53 for lead, with visual monitor to indicate when replacement is necessary. Shall meet ADA guidelines for reach ranges, when properly installed. Shall be lead-free design which meets Safe Drinking Water Act and is certified to NSF/ANSI 61 and California AB1953. Unit shall be certified to UL399 and CAN/CSA 22.2 No. 120.

SUGGESTED SPECIFICATION

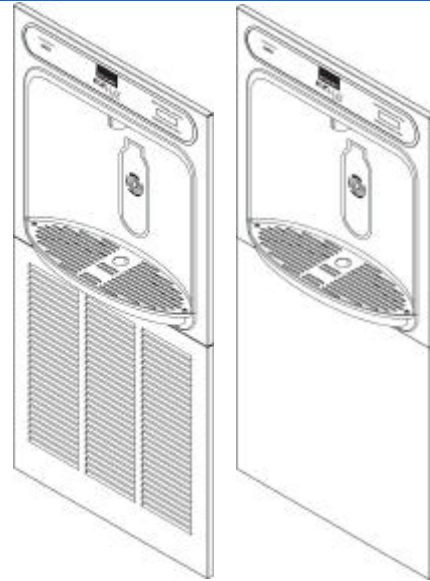
2222 Camden Court Phone: 630-572-3192
Oak Brook, IL 60523 Web: Elkayusa.com



Third Party Certified to:

- UL399 and CAN/CSA 22.2 No. 120
- Lead-free compliance including NSF/ANSI 61 and CA AB1953

IMAGES



Model LZWSM8K
(refrigerated)

Model LZWSMDK
(non-refrigerated)

- 51300C - Single replacement filter
- 51300C_3PK - Replacement filter 3-pack

OPTIONAL ACCESSORIES

Ideal for stand-alone applications or paired with SwirlFlo® and Soft Sides® fountains in:

- Educational facilities
- Healthcare facilities
- Sport and fitness centers
- Airports
- Office buildings
- Other commercial buildings

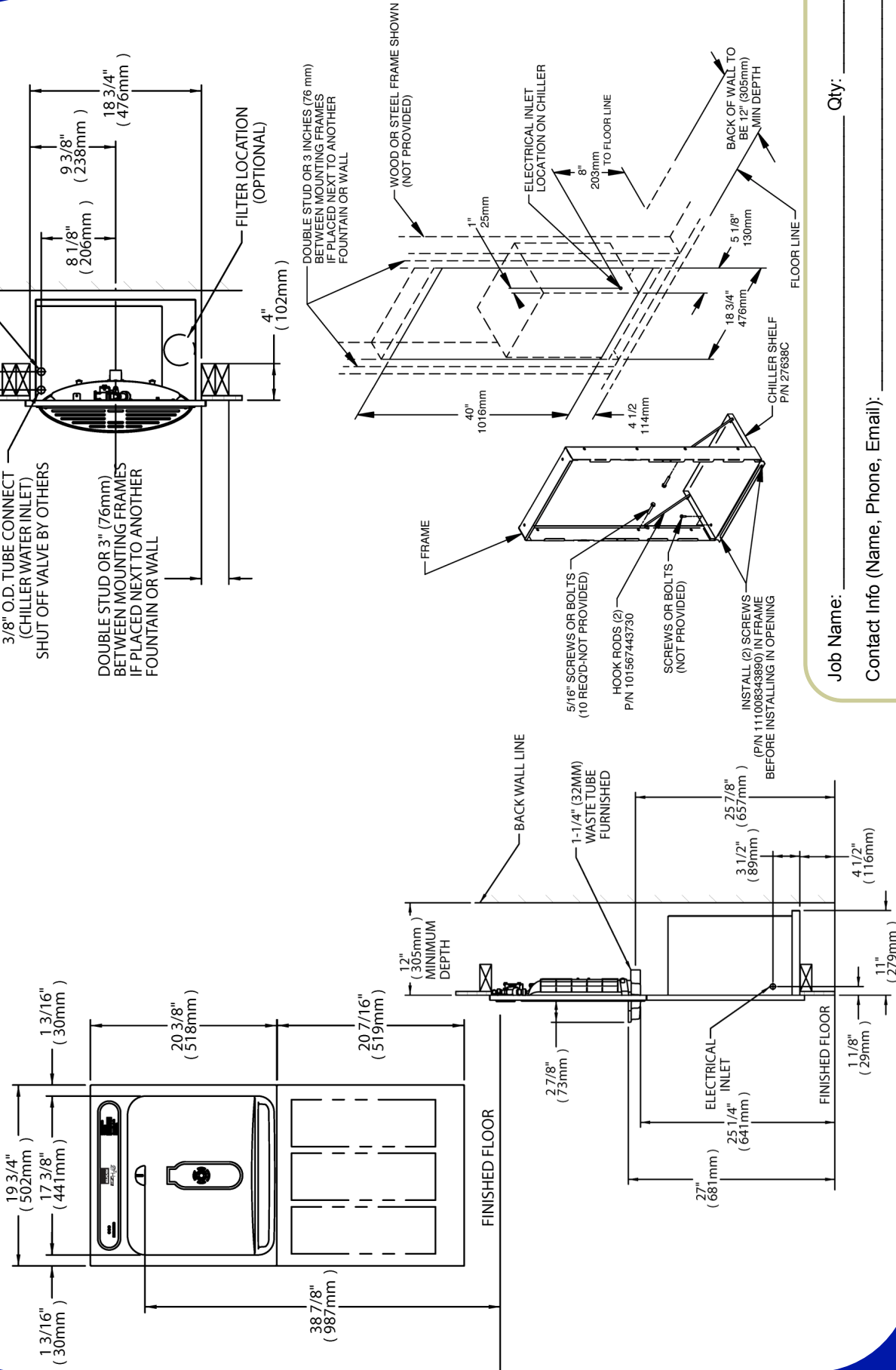
APPLICATIONS

ELKAY®

ROUGH-IN DIMENSIONS

Rated for Indoor Use Only

Models LZWSM8K & LZWSMDK



Job Name: _____ Qty: _____

Contact Info (Name, Phone, Email): _____

Approval for Manufacture— Signature and Date: _____

Comments: _____

Specifications and measurements are subject to change without notification. Please visit elkayusa.com for most current version.

2222 Camden Court
Oak Brook, IL 60523
Phone: 630-572-3192
Web: Elkayusa.com

ELKAY[®]

SPECIFICATIONS

EZH20™ – In-Wall Recessed Bottle Filling Station

Models LZWSM8PK & LZWSMDPK
(For use with non-refrigerated SwirlFlo[®] fountains)

PRODUCT FEATURES

- Designed specifically for use with non-refrigerated SwirlFlo[®] fountains
- Space saving ADA-compliant design
- Sanitary, no-touch, sensor activation with automatic 30-second shut-off timer
- WaterSentry[®] Plus 3000 gallon filter included
- Silver ion anti-microbial protection
- Quick fill rate is 1.1 gpm for refrigerated units and 1.5 gpm for non-refrigerated units
- Visual user interface display includes:
 - Filter Monitor indicating when replacement is necessary
 - Green Ticker counts the quantity of 16 oz. bottles saved from the landfill for non-refrigerated units and 12 oz. bottles saved for refrigerated units
- Includes mounting frame for quick and simple installation
- Hinged door for easy servicing
- Constructed of durable 18 gauge stainless steel and ABS plastic

Model LZWSM8PK provides 8.0 gph of 50° F water at 90° F ambient and 80° F inlet water. Model LZWSMDPK is non-refrigerated and provides ambient water. Shall be recessed design and constructed of 18 gauge Type 300 series stainless steel and ABS plastic. Shall include electronic sensor for no-touch activation with automatic 30-second shut-off timer. Shall provide 1.1 gpm flow rate with laminar flow to minimize splashing. Shall include antimicrobial protected plastic components to prevent mold and mildew. Shall include the WaterSentry[®] Plus, certified to NSF/ANSI 42 and 53 for lead, with visual monitor to indicate when replacement is necessary. Shall meet ADA guidelines for reach ranges, when properly installed. Shall be lead-free design which meets Safe Drinking Water Act and is certified to NSF/ANSI 61 and California AB1953. Unit shall be certified to UL399 and CAN/CSA 22.2 No. 120.

SUGGESTED SPECIFICATION

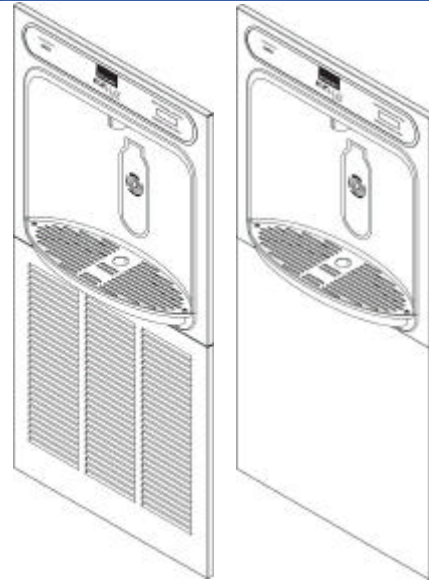
2222 Camden Court Phone: 630-572-3192
Oak Brook, IL 60523 Web: Elkayusa.com



Third Party Certified to:

- UL399 and CAN/CSA 22.2 No. 120
- Lead-free compliance including NSF/ANSI 61 and CA AB1953

IMAGES



Model LZWSM8PK
(refrigerated)

Model LZWSMDPK
(non-refrigerated)

- 51300C - Single replacement filter
- 51300C_3PK - Replacement filter 3-pack

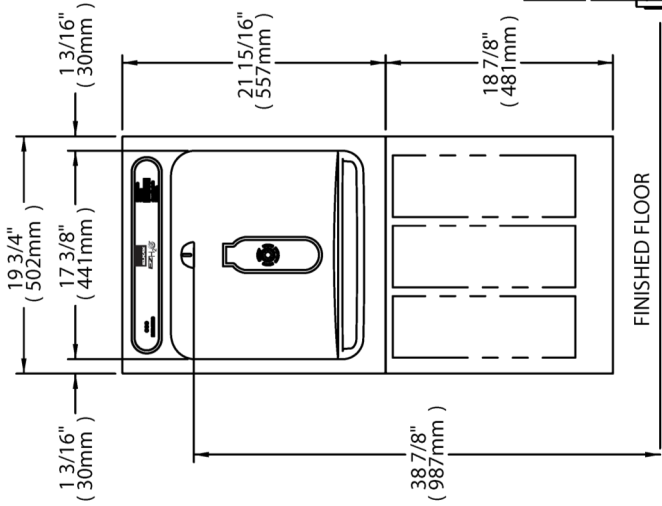
OPTIONAL ACCESSORIES

Designed for pairing with non-refrigerated SwirlFlo[®] fountains (EDFPB models) in:

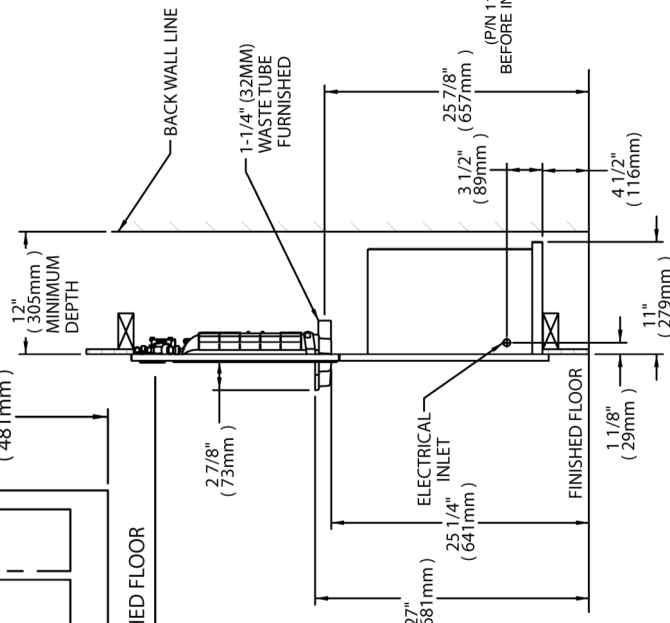
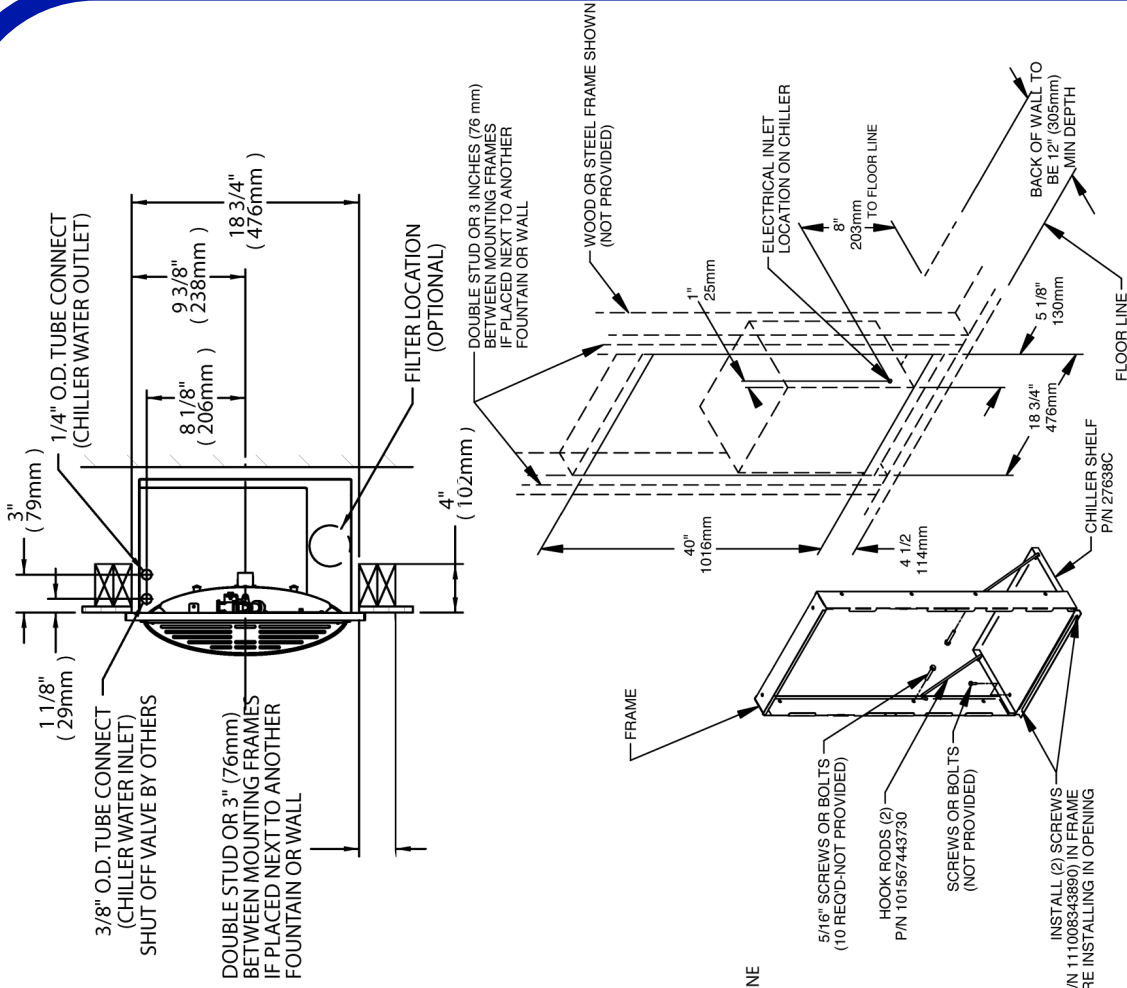
- Educational facilities
- Healthcare facilities
- Sport and fitness centers
- Airports
- Office buildings
- Other commercial buildings

APPLICATIONS

ROUGH-IN DIMENSIONS



***NOTE**
These models are designed for use with EDFPB models.



Job Name: _____ Qty: _____

Contact Info (Name, Phone, Email): _____

Approval for Manufacture — Signature and Date: _____

Comments: _____

Specifications and measurements are subject to change without notification. Please visit elkayusa.com for most current version.

2222 Camden Court
Oak Brook, IL 60523
Phone: 630-572-3192
Web: Elkayusa.com